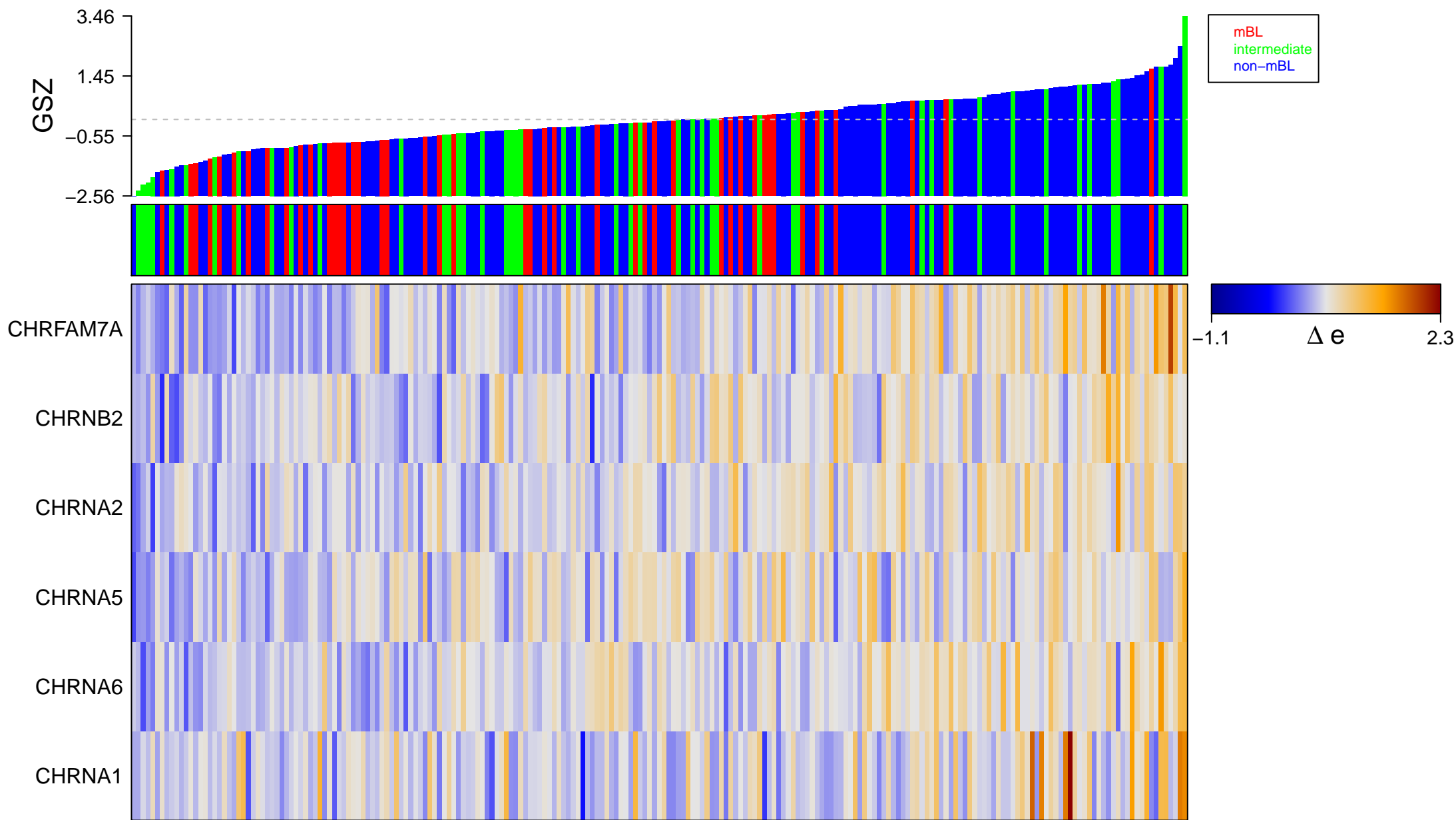
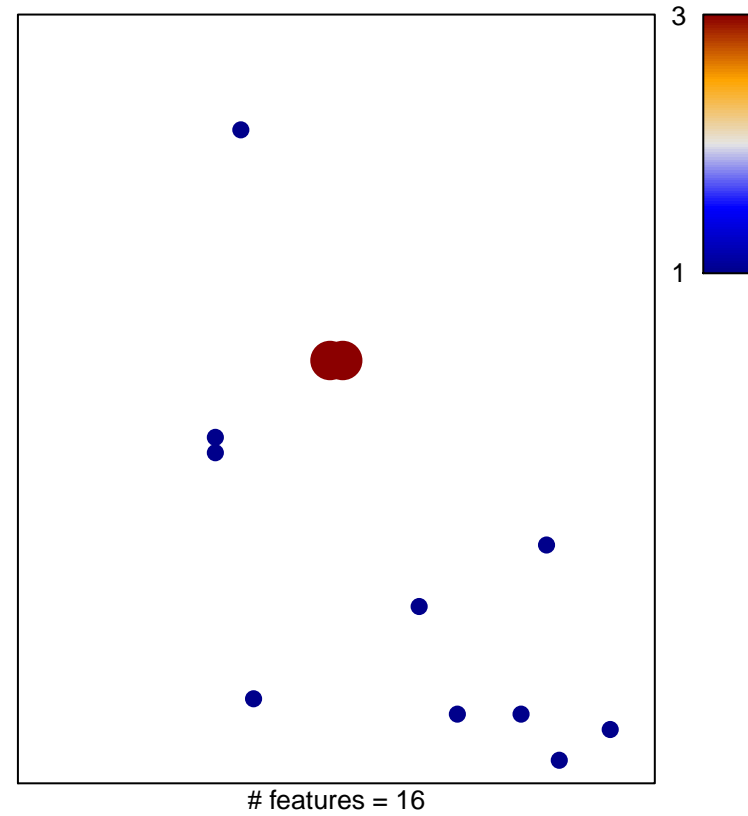
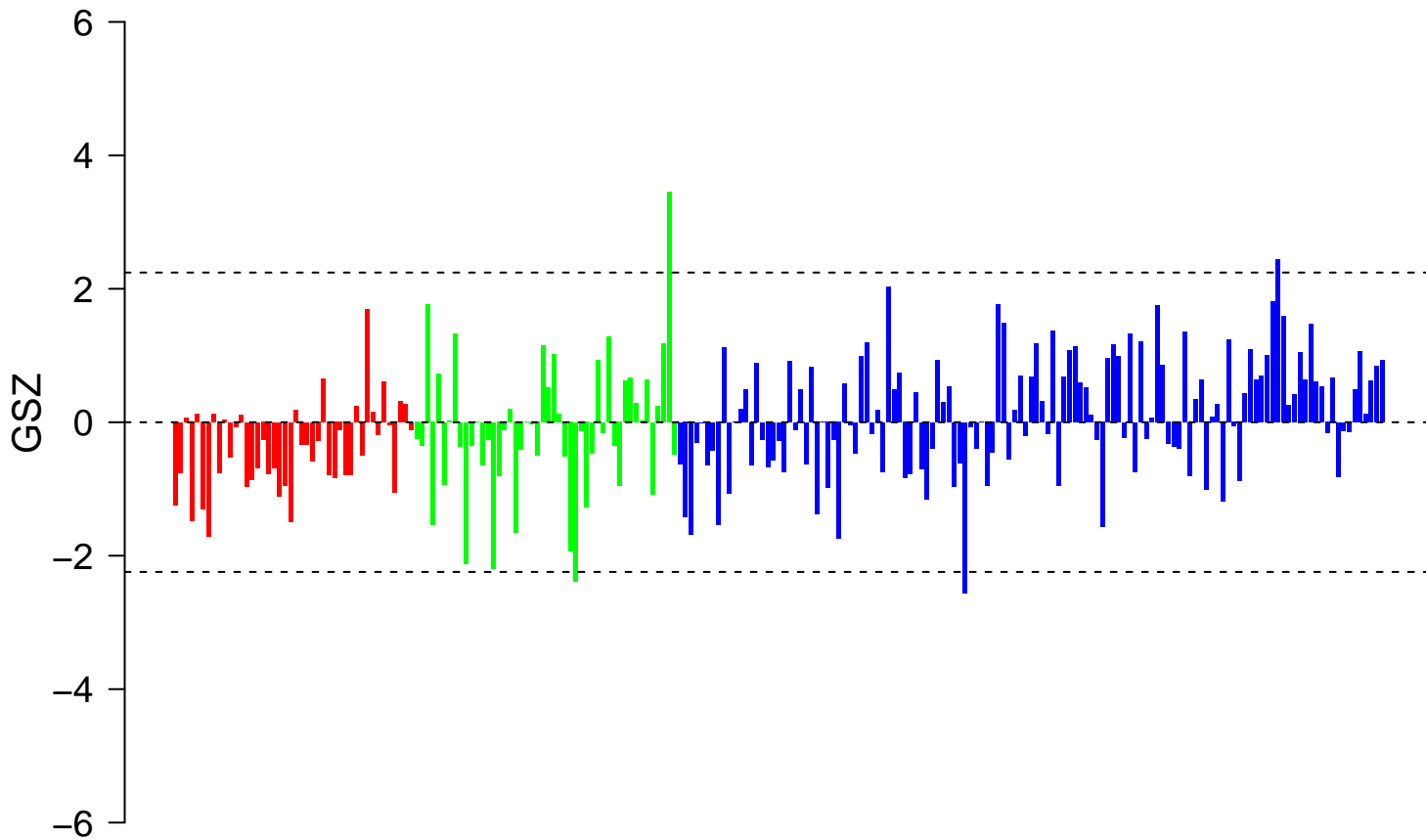


# OME\_HIGHLY\_CALCIUM\_PERMEABLE\_POSTSYNAPTIC\_NICOTINIC\_ACETYLCHOLINE\_RECEPTOR



# LY\_CALCIUM\_PERMEABLE\_POSTSYNAPTIC\_NICOTINIC\_ACETYLCHOLINE\_RECEPTORS



■ on  
■ -  
□ off



